

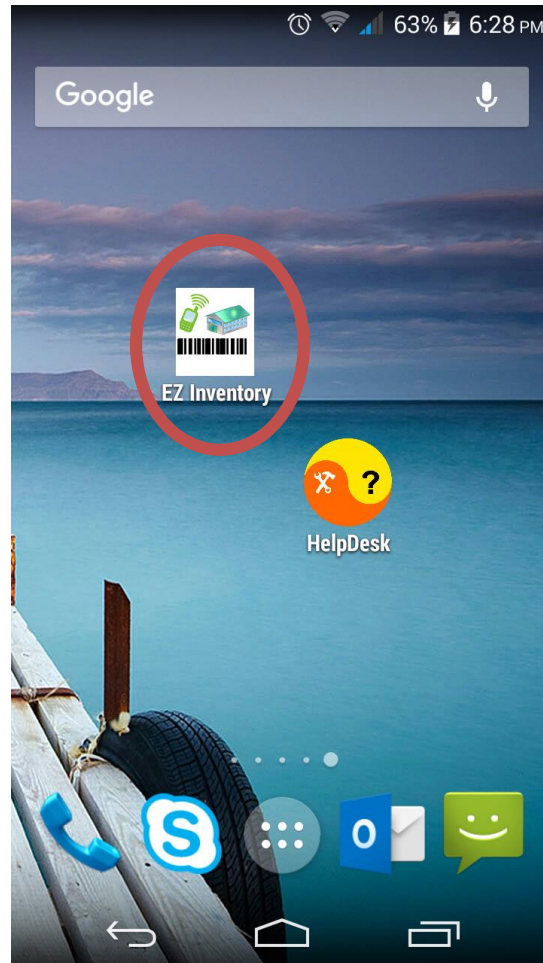
EZ Inventory Guide

Table of Contents

1. INSTALATION AND SETUP	3
2. INITIAL SCREEN	4
3. ITEMS MENU	5
4. SYNCRONIZATION	8
5. CONCLUSION	8

1. INSTALATION AND SETUP

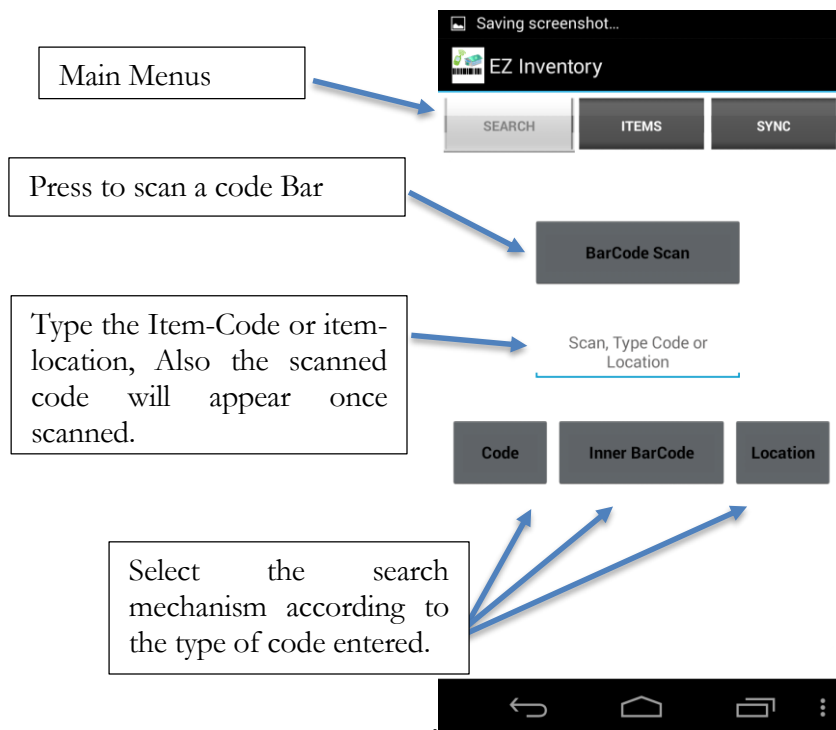
The app can be downloaded from the Google play store or Amazon. Just search for “EZ Inventory” and download the app. A download link for any of the two store is available at our site: <http://www.arnetapps.com/ezinventory.html>. Once installed you will see the app icon on your device. To open jus pinch it and start using it.



2. INITIAL SCREEN

At the top of the screen you will see the main tabs of the app. These are constant on every module. The Search is the default every time you launch the app. Then is the Items tab where you will be able to create new items and edit them. Finally, the Sync tab used to import and export data.

The initial screen will prompt you to enter an item code. You can search by Item-Code; Bar-Code; or Location. If you are going to search by Bar-Code press the button "Scan" and proceed to scan. Once the scanning process is done it will return the scanned code. Press the button labeled "Inner Bar-Code" to search using the scanned code. If you introduced the Item code or Location instead press the appropriate button "Item Code" or "Location" accordingly. If the item exists in your database it will show you the item; if it cannot be found it will display a message stating it could not be found.

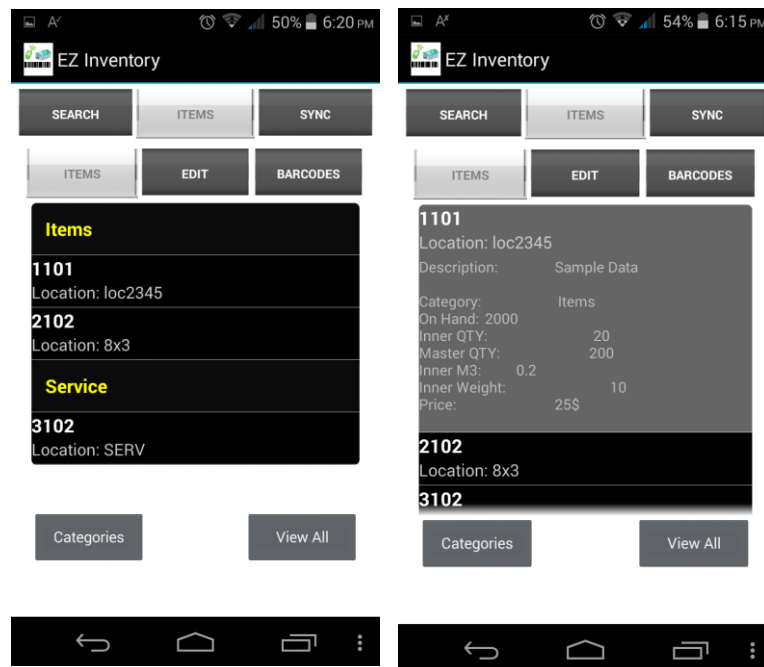


3. ITEMS MENU

This is the main module of the app where you will be doing all your activities. You will be able to:

- See the search item.
- Edit the selected item.
- Display the image of the item.
- Scan new or update bar-code information.
- Create new items.

Once you search an item it will be displayed on the Items page of the module. You can make a quick pinch to display its most relevant data or a long pinch will take you to the edit section. If you want to see all items currently on the database just press “show all” at the bottom of the screen. The system will show all items ordered by its Item-Code. If you want to display all Items ordered by their category just press “category”.

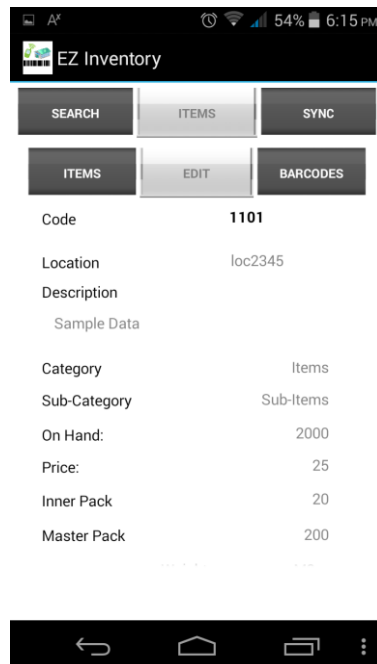


Create a new Item

To create a new item just press the “EDIT” button. This action will take you to the items detailed page and all fields will be blank. Pinch on the upper part of the screen next to the label item-code is and type the new item-code. From there start filling all relevant fields you will use. Once you have entered all your items info, press “Save”. A message that the item has been saved will appear.

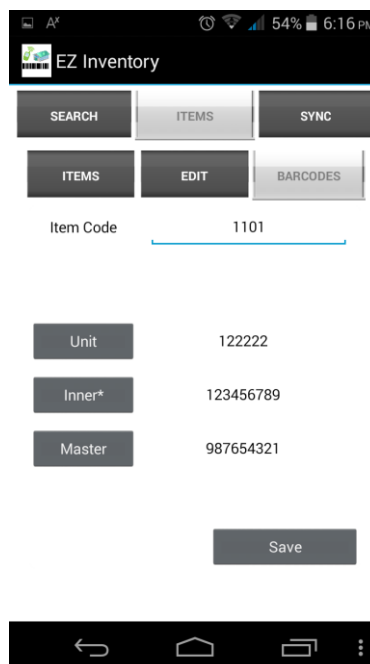
Edit and Existing Item

To edit an Item first, you will have to search for it. Once the item is displayed on the search result screen, long pinch on it. This action will take you to the “EDIT” screen. Here you can make all the modifications you need except the item-code. If you change the “item-code” the system will interpret it as a new item. When you are done editing the info press the “Save” button at the bottom of the screen. A message that the item has changed will appear.



Scan new or edit Bar-Codes

If you need to edit or add a new bar-code, first, search for the item. It is important that the item **must** exist prior too adding the bar-code. Once you searched the item and long pinch it to enter in the edit mode, at the bottom of the screen you will see a button called “Bar-code”. Press that bottom and it will send you to the bar-code edit page. Now you can scan the code you wish for the desire unit of measurement. **It is important to note that only the Inner Bar-Code is used for searching.** When you complete the scan press “Save” and a message indicating the changes have been saved will appear.



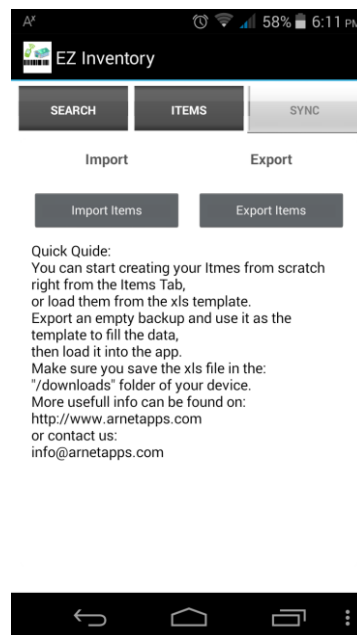
Item Images

The item images have to be loaded into the app manually into a folder called “/img” you must navigate using your devices “File Manager” the folder has to be created in the following location on your device: “/Android/data/a.ezinventory/files/img”. The image has to be “jpg” format and the name has to be the item-code exactly as the one saved on the database.

To visualize the image just enter into edit mode of the desired item and press “View Img”. The img will appear.

4. SYNCRONIZATION

The sync module is used to load or save your data. To save your application data use the export function. This function will create an excel file which you can save online or send via email. To upload data into the app simply use the template provided in our website: <http://www.arnetapps.com/ezinventory.html>, or just use the file created during the export function, previously describe, as a template. Once your template is ready save it in your devices "/>downloads" folder and press the import button.



5. CONCLUSION

EZ Inventory allows you to check the status of your inventory and the possibility to update or create new products and details as you go. You will be able to create items one by one directly into the app or upload them from an excel template (the upload option is not available on the free version). You could also export your data to excel and send it as an attachment to your back office for further analyst or editing.

For additional information contact us by email: info@arnetapps.com
or our webpage: <http://www.arnetapps.com/ezinventory.html>